



VIVID ENERGIES

LED Lighting Solutions For Our
Future And Your Bottom Line

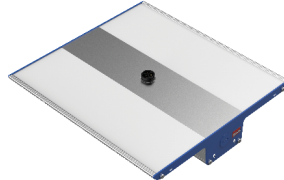
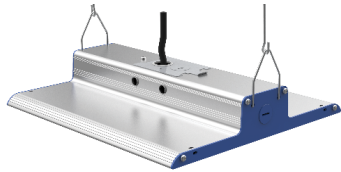


Type:

Project:

Description:

ALHB Smart Linear High Bay



Up To

200
Lumens Per Watt

LED

Switchable Lumens and CCT Option

FEATURES

- Delivers output range between 9,000 - 80,000 lumens
- Available integrated wireless IoT Zigbee® mesh network controls
- Toolless field installable Optical Lenses
- Optics include two aisleway options, medium, wide and diffuse
- Plug in power cord for quick and easy installation
- Lightweight compact design featuring extruded aluminum heatsink

SPECIFICATIONS

Model Number	Dimensions	CRI	Operating Temperature	Power Factor	CCT	Listing
VIV-ALHB	ø 10.5" W x 2.75" H <i>See page 4 for lengths by wattage</i>	70+ 80,90 Available	-22° to 131° F	>0.95	3000K 4000K 5000K	Damp Location

5
Year Warranty

Plug
& Play

Wireless Network

ORDERING GUIDE

Sample Number: VIV-ALHB-PREM-160W-UNV-120D-50K-D1-MS1-SC-PPC6-P3-YC10

Vivid: VIV-ALHB	Model: STAN - Standard ¹ , PREM - Premium ²	Wattage: 60W, 80W, 100W, 120W, 150W, 200W, 240W, 300W, 400W, SKU1 ⁴ - Switchable 100-200W, SKU2 ⁴ - Switchable 220-400W	Voltage: UNV - 120-277V, 480V (Available)	Optical Lens: 120D - 120° No Lens, 120DL - 120° Lensed, 90DL - 90° Lensed, 55DLA - 55° Lensed Aisle, 30DLA - 30° Narrow Aisle, FL - Frosted/diffuse lens	CCT: 30K - 3000K, 40K - 4000K, 50K - 5000K, or 3CCT ⁴ - Switchable	Dimming: D1 - 0-10V to 5%, D0 - 0-10V to Off, DA - DALI	Sensor: NOS - No Sensor, SR - Sensor Ready, MS1 - IR Sensor < 30' Ceiling, MS2 - IR Sensor < 40' Ceiling, ZG01 - Zigbee®	Mounting: SC - Suspended Chain/Cable ³ , PM - Pendant ³ , SM - Surface, IYM - Inverted Y Uplight ³	Cord Length: NOC - No Cord, Knockout access provided, C3 - 3', C6 - 6', PPC3 - 3' with plug, PPC6 - 6' Cord with Plug	Plug (NEMA Type): NOP - No Plug, P1 - 5-15P, P2 - 5-20P, P3 - L5-15P, P4 - L6-15P, P5 - L7-15P, P6 - L7-20P, P7 - L8-20P, P8 - L2420P	Options: PR - Plug & Power Receptacle (5-15R), EM - 8W Remote Battery, EM20 - 20W Remote Battery, SPT - Surge Protector, YC5 - Y-Cable w/ hook (5 ft), YC10 - Y-Cable w/ hook (10 ft), YC15 - Y-Cable w/ hook (15 ft), YC20 - Y-Cable with Hook (20 ft), 80CRI, 90CRI
-----------------	---	---	---	--	---	---	--	---	---	---	---

¹ Up to 150 lm/W

² Up to 200 lm/W

³ Chain, cable, conduit, hardware not included

⁴ SKU1 and SKU2 Adjustable wattage selections are paired with 3CCT Option

www.vividenergies.com • Phone: 1-855-494-6727 • Email: sales@vividenergies.com



VIVID ENERGIES

LED Lighting Solutions For Our
Future And Your Bottom Line



Type:

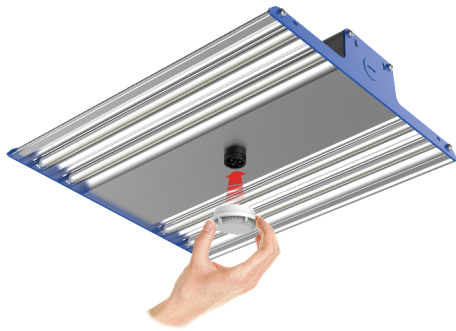
Project:

Description:

LED

SMART CONTROLS SYSTEM OVERVIEW

Industry leading plug and play ZigBee® wireless mesh network sensor. Can be quickly installed in the field or factory installed.



Quick Change Option:
Standard to
Smart Fixture
in Seconds

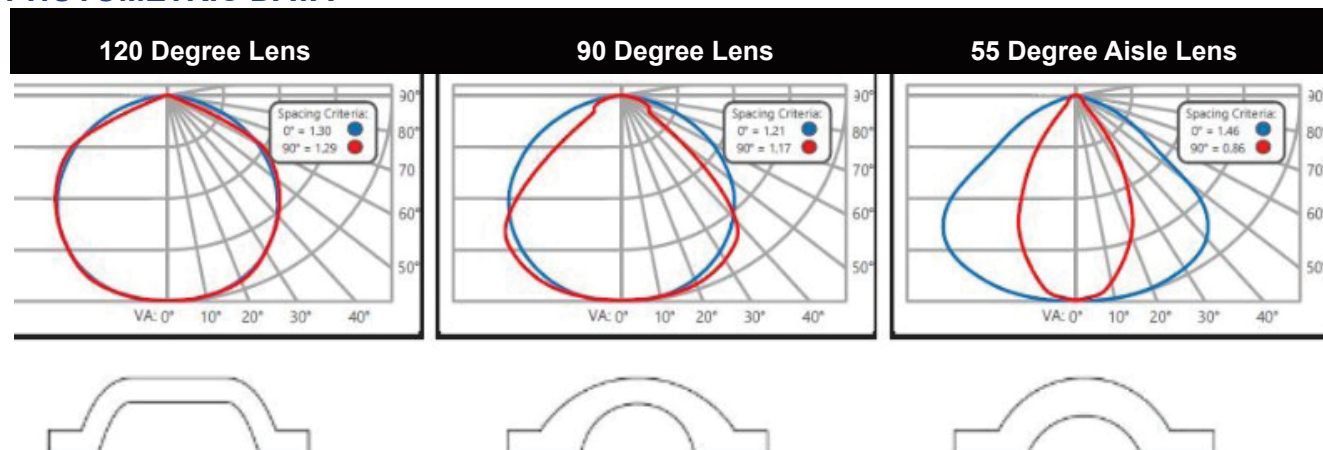
Featuring: Occupancy Sensing, Auto Scheduling, Task Tuning, Daylight Harvesting, Load Shedding, Zoning /Grouping

LUMEN OUTPUT AND COLOR TEMPERATURE (CCT) ADJUSTMENT

Reduces necessary SKUs to TWO which offers EIGHT wattages and 3 CCT choices!
Streamlines ordering and supports stocked inventory due to flexibility.



PHOTOMETRIC DATA





VIVID ENERGIES

LED Lighting Solutions For Our
Future And Your Bottom Line



Type:

Project:

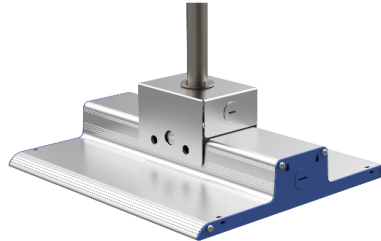
Description:

LED

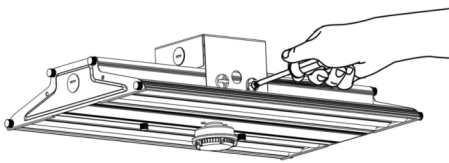
MOUNTING OPTIONS



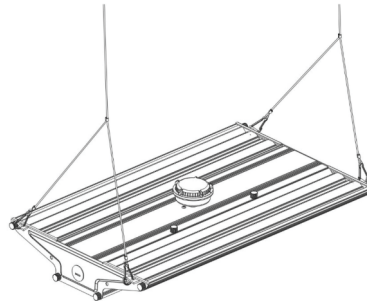
Suspended Cable/
Chain Mount (SC)



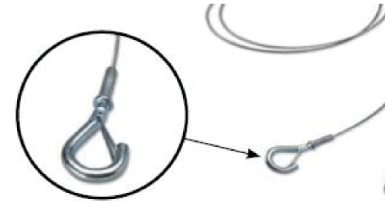
Pendant Mount (PM)



Surface Mount (SM)



Inverted Y Mount (IYM)



Option: Y-Cable
(YC5/10/15/20) compatible
with (SC) and (IYM)

PERFORMANCE¹

Model Number		VIV-ALHB								
Input Wattage		60W	80W	100W	120W	150W	200W	240W	300W	400W
Premium	Efficiency (+/-5%)	Up to 200 Lm/W								
	Delivered Lumens (+/-5%)	12,000	15,200	18,500	21,600	26,700	35,600	43,200	52,500	72,000
Standard	Efficiency (+/-5%)	Up to 150 Lm/W								
	Delivered Lumens (+/-5%)	9,000	11,920	14,500	17,400	21,000	28,000	33,600	43,500	58,000

¹Output values based Non-Lensed Optic, 5000K CCT, 70 CRI: **120D** (120°) = 100%

Optical Lens Multiplier: **120DL** (120°) = 90%, **90DL** (90°) = 93%, **55DLA** (55°) = 92%, **30LA** (30°) = 91%, **FL** (Frosted/diffuse) = 85%

CCT/CRI Multiplier: 4000K/70 CRI = 98%, 5000K/80 CRI = 95%, 4000K/80CRI = 92%, 3000K/80CRI = 87%, 4000K/90CRI = 80%



VIVID ENERGIES

LED Lighting Solutions For Our
Future And Your Bottom Line



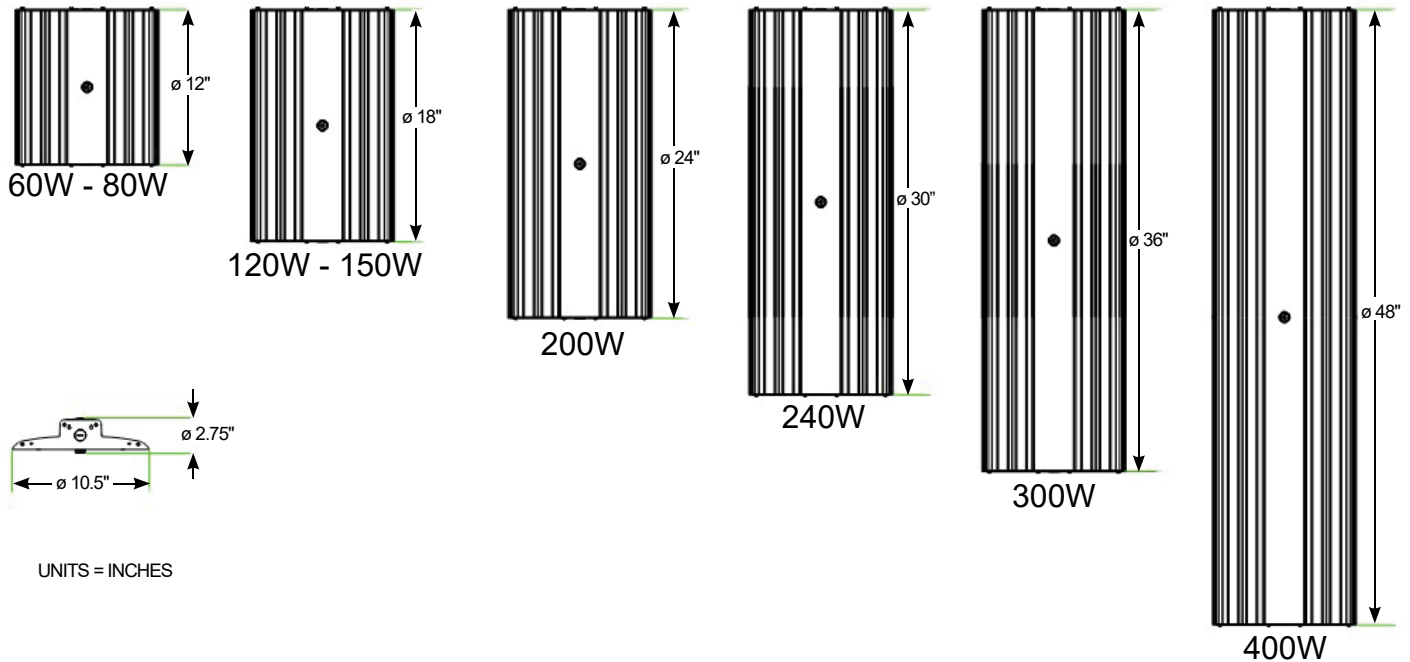
Type:

Project:

Description:

LED

PRODUCT DIMENSIONS



PLUG IN POWER

No internal fixture access needed to install power. Allows easy disconnection for routine maintenance.

